



THE UNIVERSITY OF CHICAGO

CRIME LAB  
Urban Labs

# 2023 End-of-Year Update

Source: Chicago Data Portal

Victims of Homicides and Non-fatal Shootings

Chicago Violence Reduction Dashboard

*December 21st, 2023*



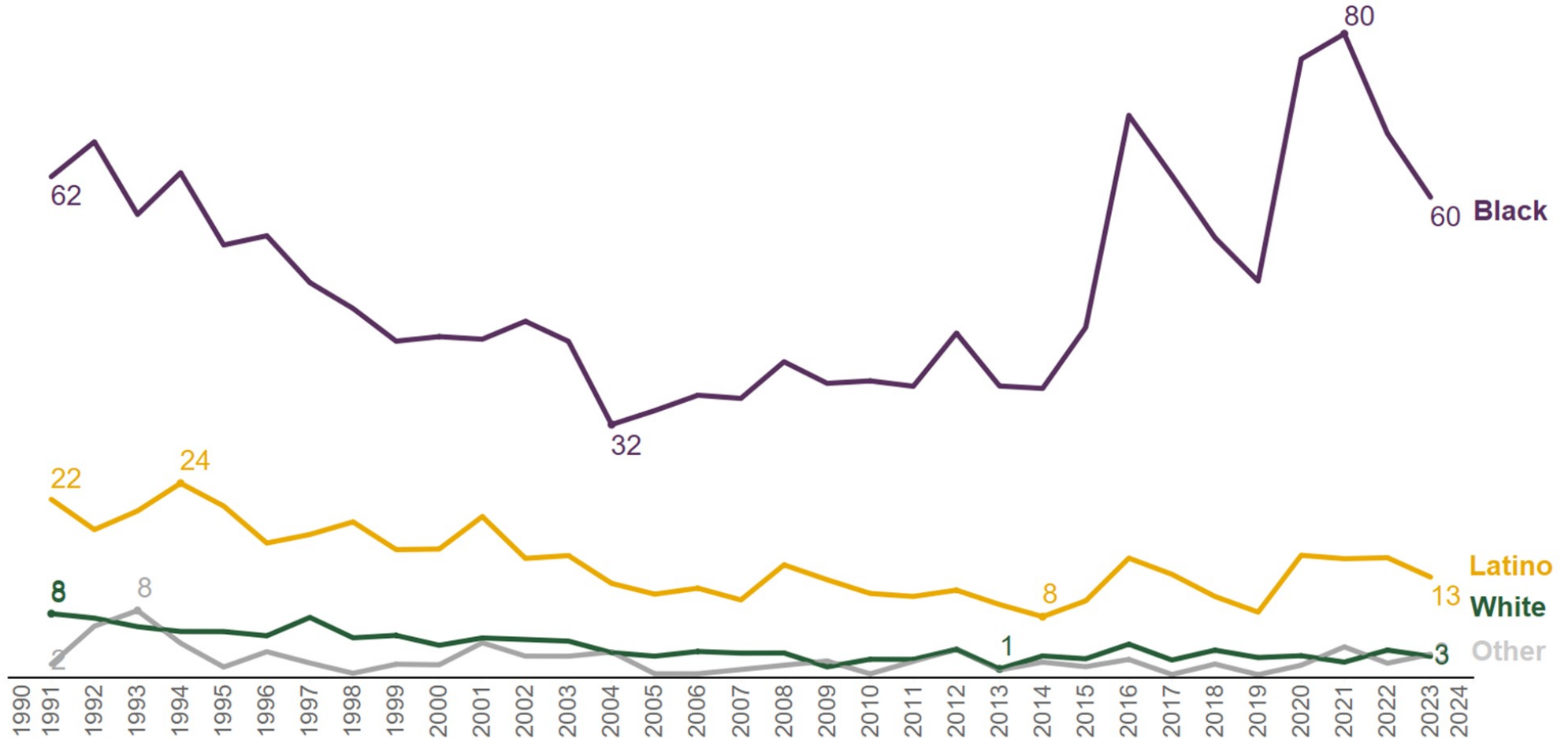
# ○ Safety Gap by Demographics



# The safety gap between Chicago's Black and white residents is shrinking from its high-water mark in 2021.

## Homicides per 100,000 Residents by Race of Victim, Year-to-Date (1991-2023)

Based on data from January 1st - December 13th

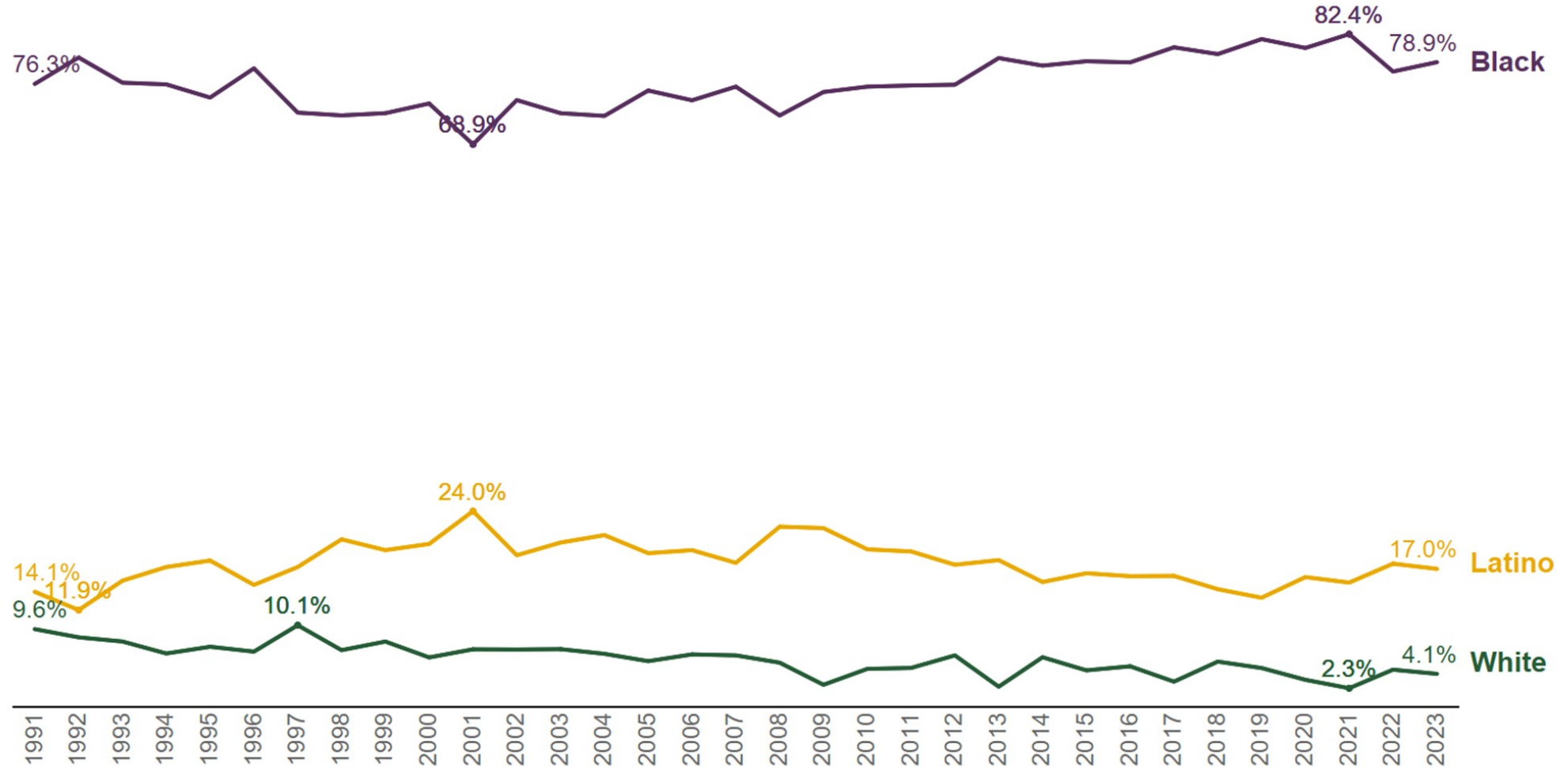




**Despite making up just one-third of Chicago's population, more than three-quarters of the city's homicide victims are Black.**

### Share of Homicide Victims by Race, Year-to-Date (1991 - 2023)

Based on data from January 1st - December 13th

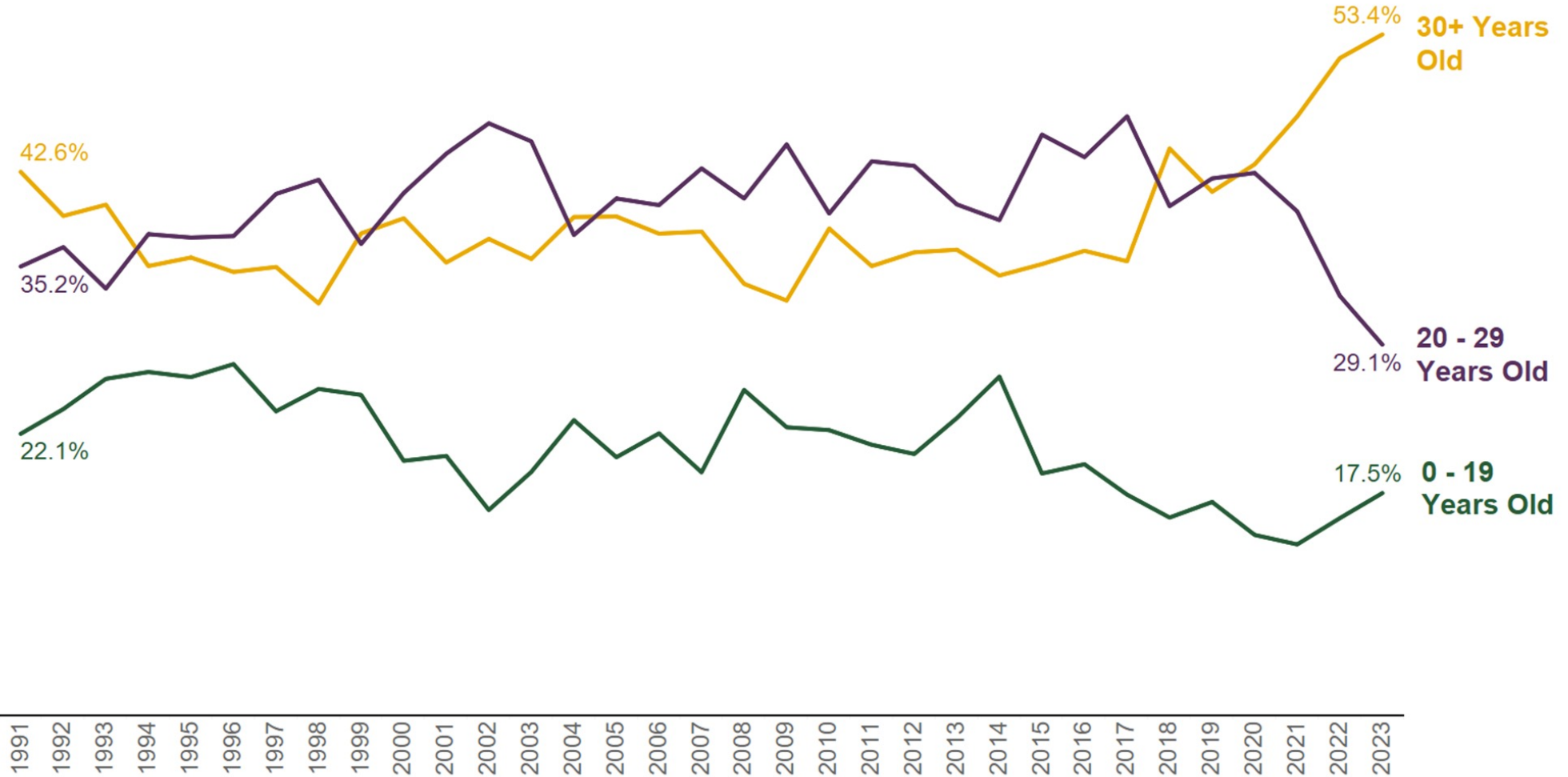




The share of homicide victims over age 30 has increased significantly since 2019, from 41% to 53%.

### Share of Homicide Victims by Age, Year-to-Date (1991 - 2023)

Based on data from January 1st - December 13th





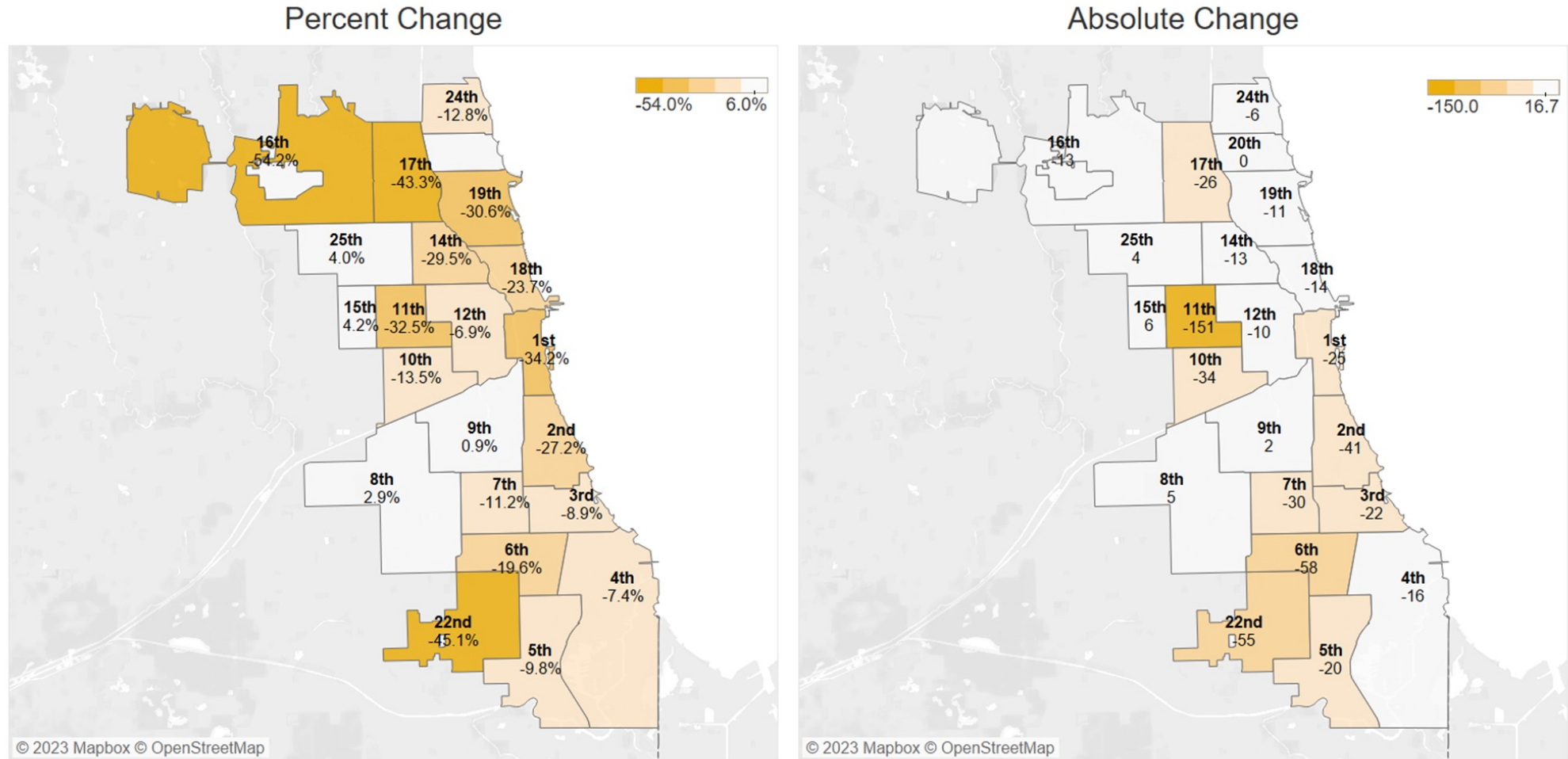
- **Safety Gap by Geography**



In 2023, 150 fewer residents in District 11 were victims of a shooting (fatal and nonfatal) compared to 2022.

### Change in Gunshot Victimization in 2023 vs. 2022, Year-to-Date

Based on data from January 1st - December 13th



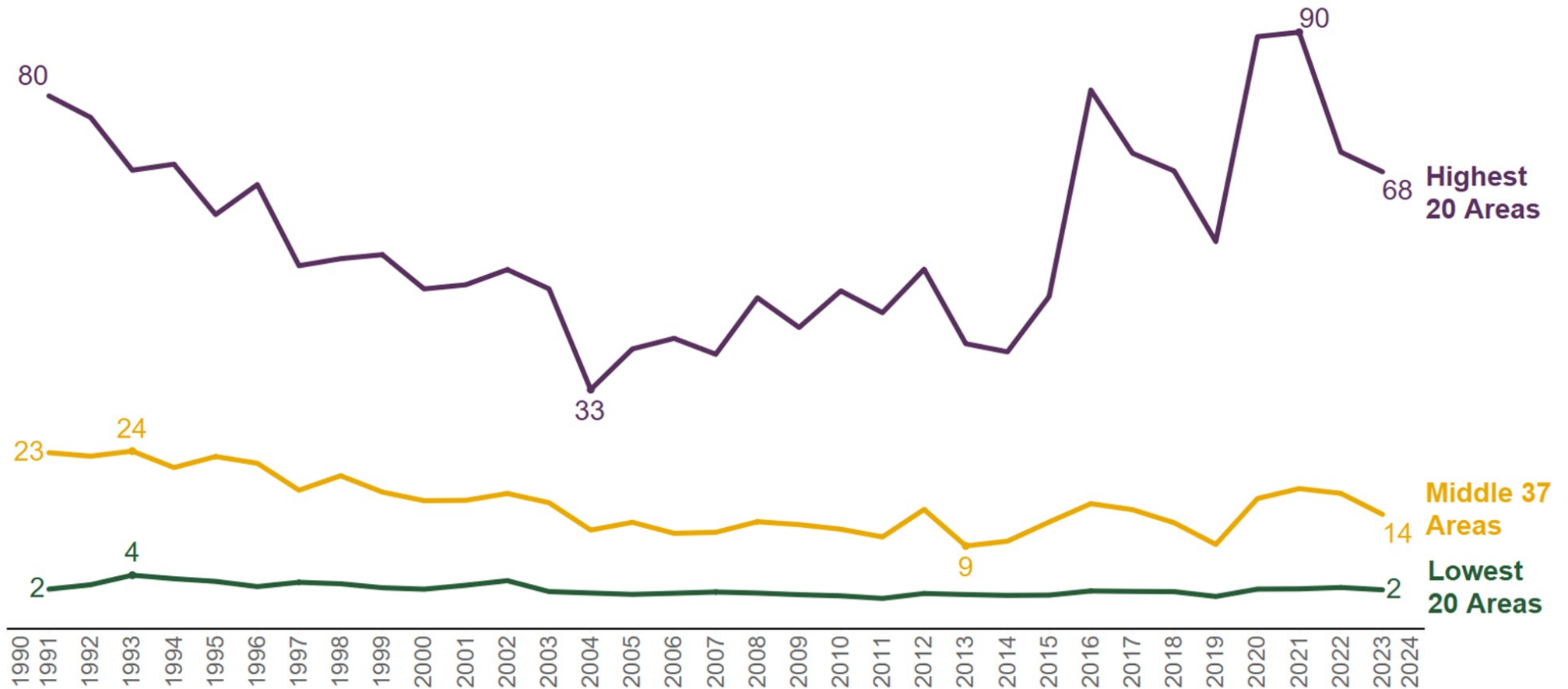




The neighborhoods with the highest homicide rates experience approximately 30x more homicides than the neighborhoods with the lowest rates.

### Homicides per 100,000 Residents by Highest, Middle, and Lowest Homicide Rate Community Areas, Year-to-Date (1991-2023)

Based on data from January 1st - December 13th



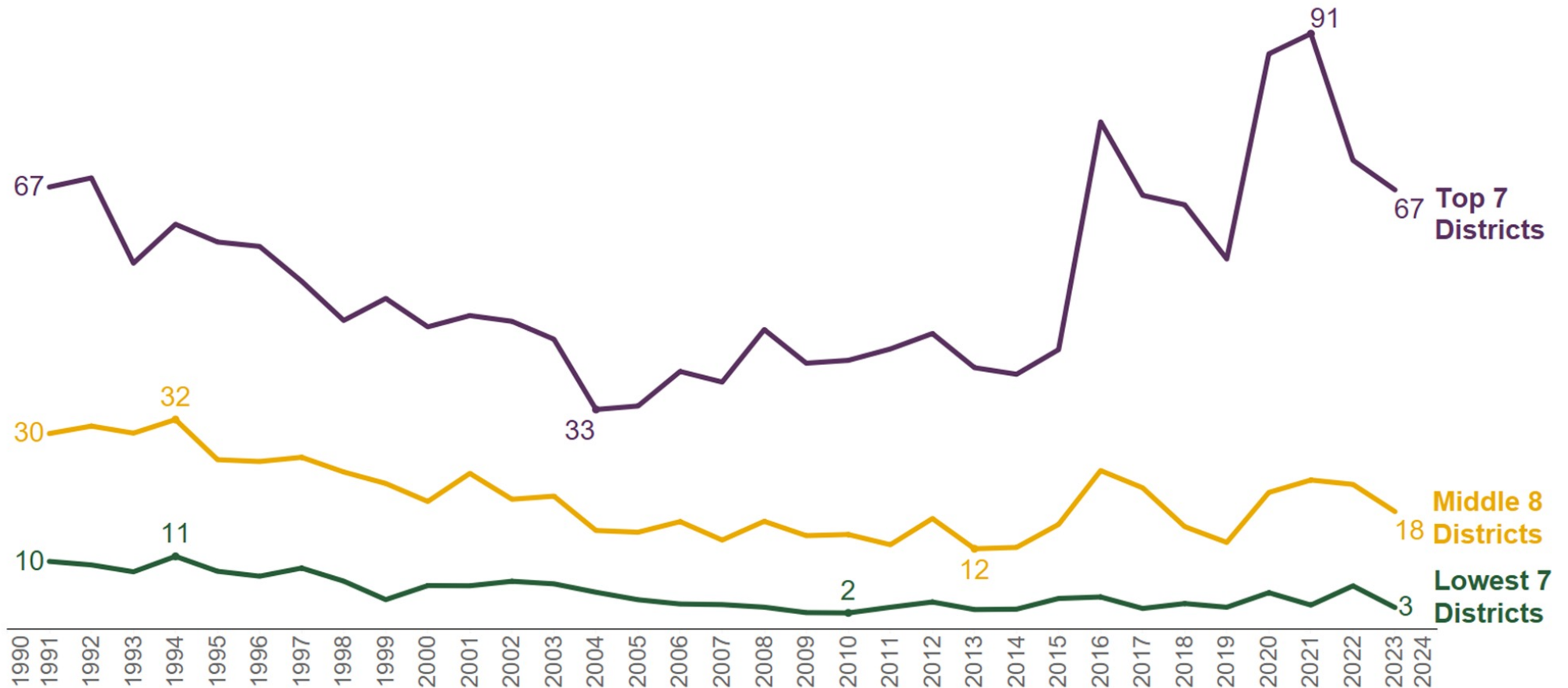




The police districts with the highest homicide rates experience approximately 20x more homicides than the police districts with the lowest rates.

### Homicides per 100,000 Residents by Highest, Middle, and Lowest Homicide Rate Police Districts, Year-to-Date (1991-2023)

Based on data from January 1st - December 13th



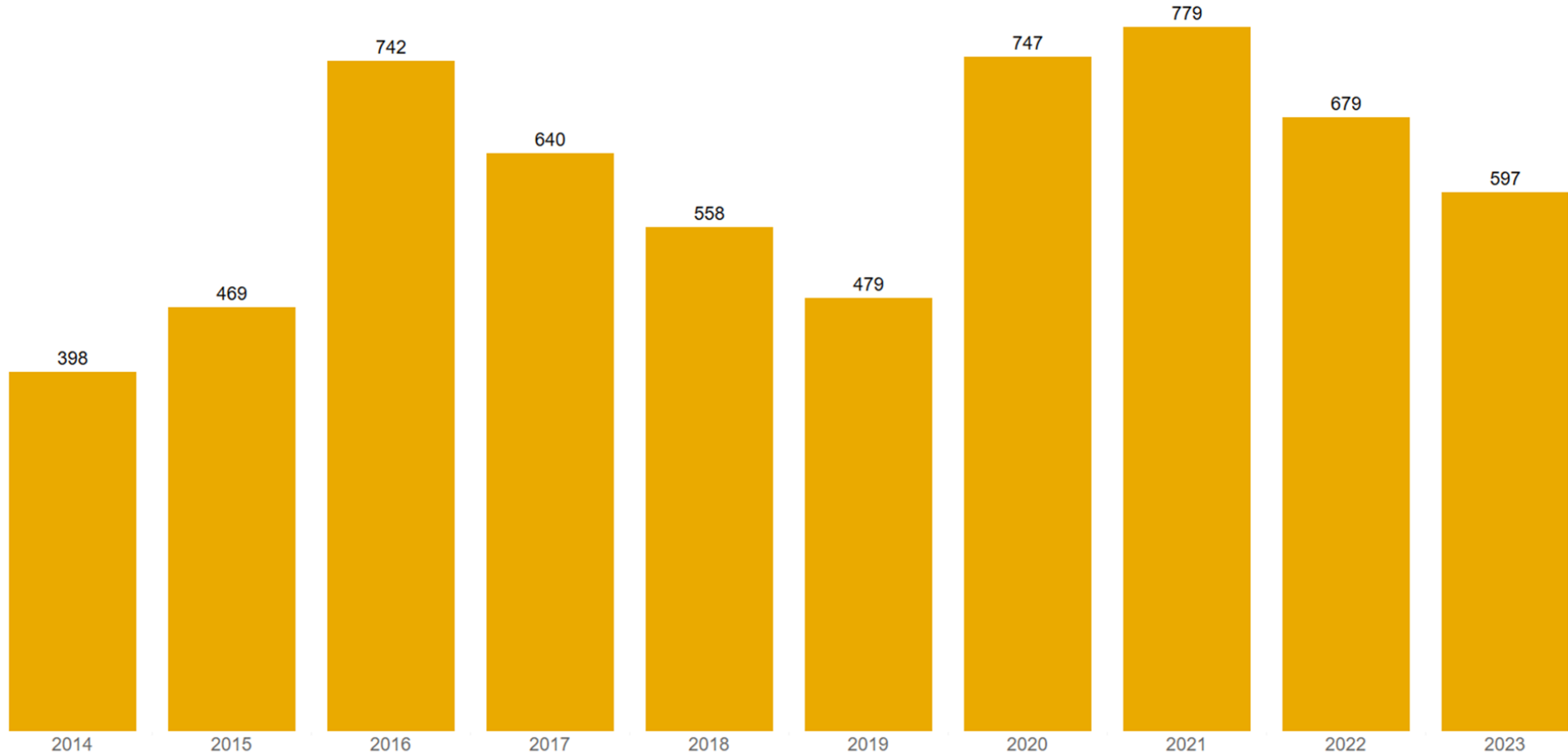


- Year-over-Year Crime Counts

**Overall homicides have decreased by 12% in the last year.**

### Homicides by Year, Year-to-Date

Based on data from January 1st - December 13th

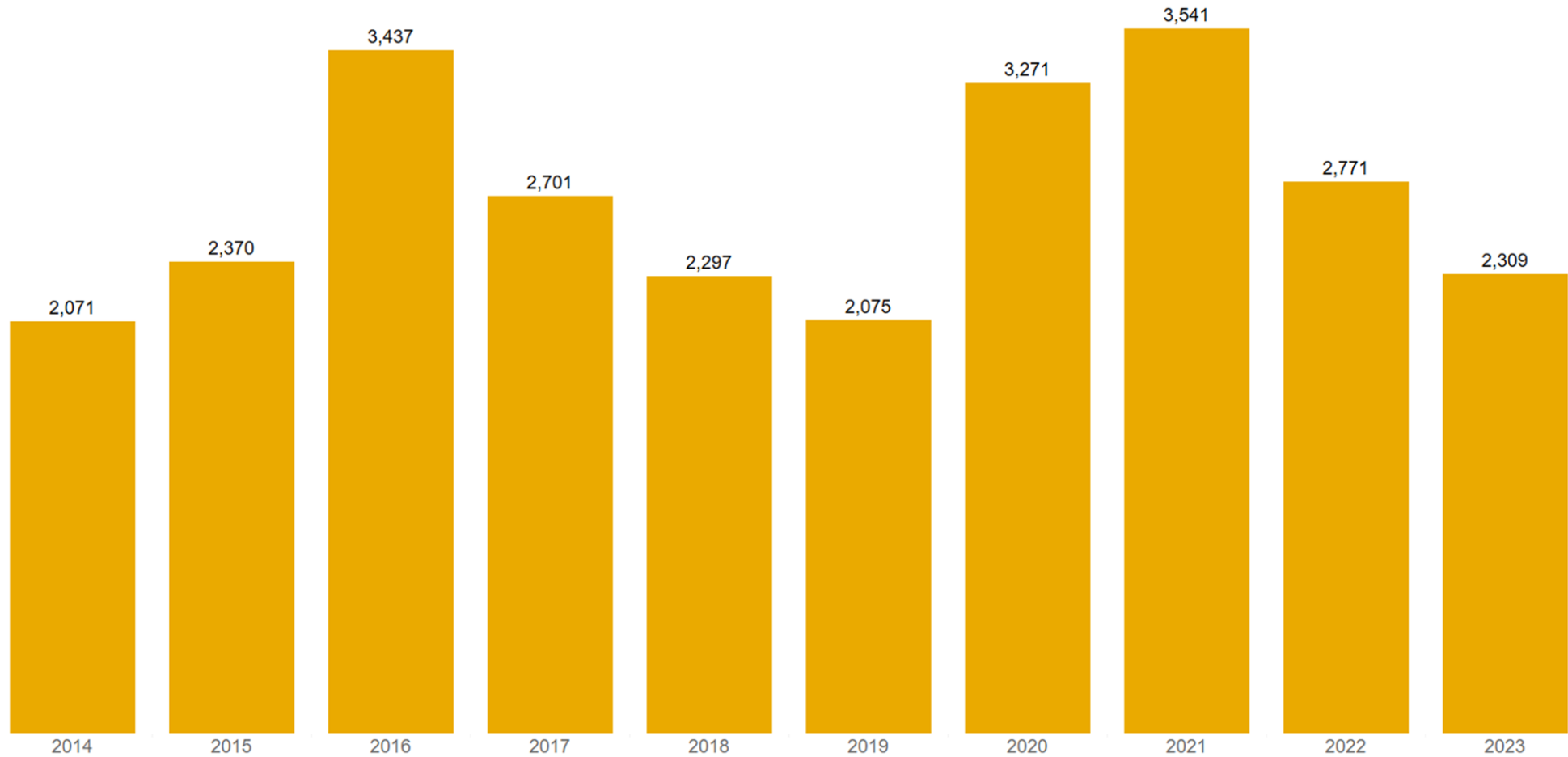




## Non-fatal shootings have decreased by 17% from 2022 to 2023.

### Non-fatal Shootings by Year, Year-to-Date

Based on data from January 1st - December 13th

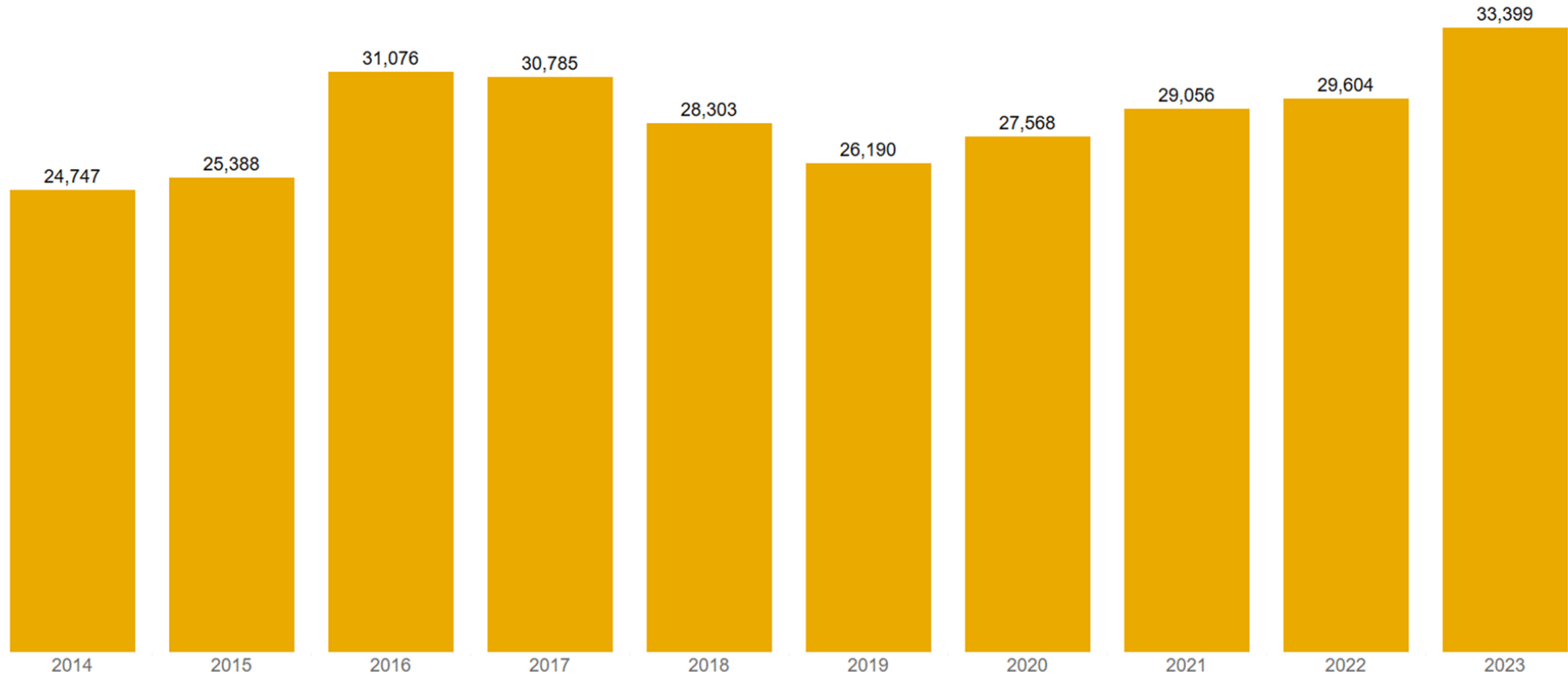




## Overall violent crime has increased by 13% from 2022 to 2023.

### Violent Crimes by Year, Year-to-Date

Based on data from January 1st - December 13th



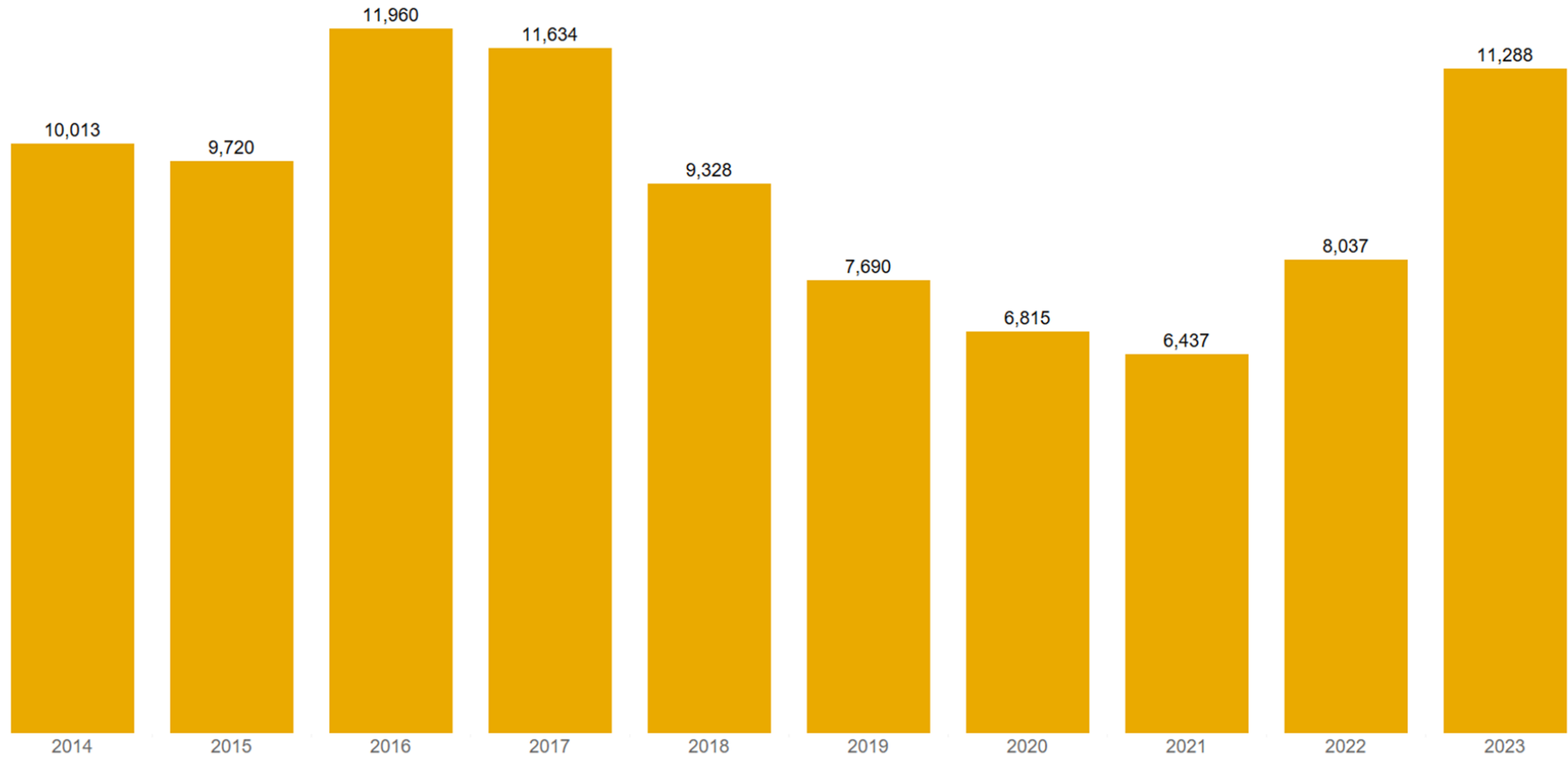
Violent crimes are defined by the FBI as "those offenses which involve force or the threat of force." Based on CPD offense reporting practices, this includes: fatal shootings, non-fatal shootings, non-shooting homicides, aggravated assaults, aggravated batteries, robberies, criminal sexual assault, domestic violence, and human trafficking.



## Citywide robberies have increased by 40% in the last year.

### Robberies by Year, Year-to-Date

Based on data from January 1st - December 13th





THE UNIVERSITY OF CHICAGO

CRIME LAB  
Urban Labs



# Thank You

Questions?

Contact Roseanna Ander, Executive Director  
[rander@uchicago.edu](mailto:rander@uchicago.edu)

Prepared by Thomas Ballard, Javier Lopez, Jacob Miller